

LINEAR FLOOR DRAIN - STAINLESS STEEL FRAME VERTICAL INSTALLATION OUTLET D50

 45 l/min  70 mm  50 mm

MODEL

SlimLine Black

REF. NO.

CH 600 SL C

DESCRIPTION

Linear Floor Drain
for vertical installation
outlet D50

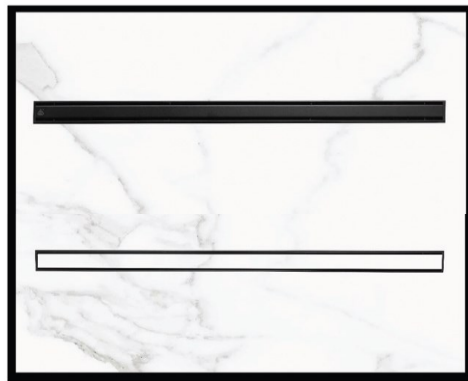
- flowrate 45 l/min
- installation height 70 mm
- grid height adjustable
0-8 mm
- matt black grid 1.5 mm

SIZE

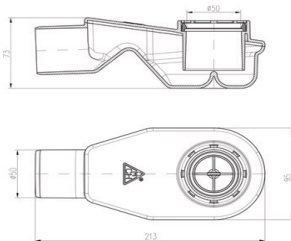
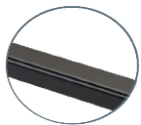
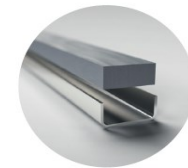
600 mm

FINISH

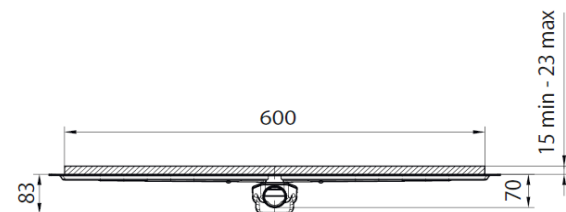
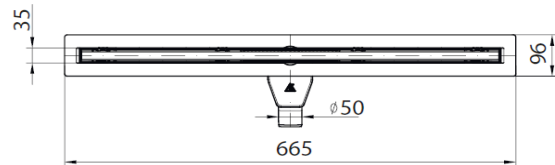
Matt Black



Slim Line



REF.3002 - horizontal swivel siphon 360°
to be purchased separately



- 1 Stainless steel grid
- 2 Strainer to catch dirt
- 3 Height-adjustable stainless steel frame support from 0-8 mm
- 4 Height-adjustable stainless steel frame
- 5 Drain body
- 6 Gasket HT D50
- 7 Swivel side siphon D50



Body support
(polystyrene)