

## LINEAR FLOOR DRAIN - STAINLESS STEEL FRAME VERTICAL INSTALLATION OUTLET D50

⌚ 45 l/min    ↑ 70 mm    ⌀ 50 mm

**MODEL**

SlimLine

**REF. NO.**

CH 800 SL

**DESCRIPTION**

Linear Floor Drain  
for vertical installation  
outlet D50

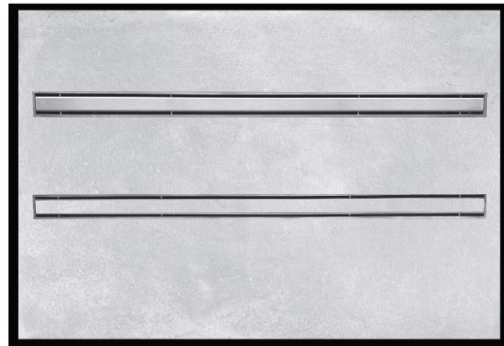
- flowrate 45 l/min
- installation height 70 mm
- grid height adjustable 0-8 mm
- stainless steel grid 1.5 mm matt finish

**SIZE**

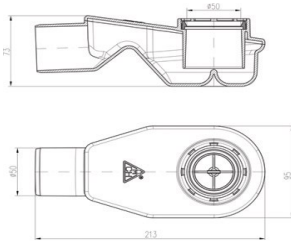
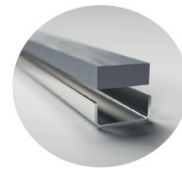
800 mm

**FINISH**

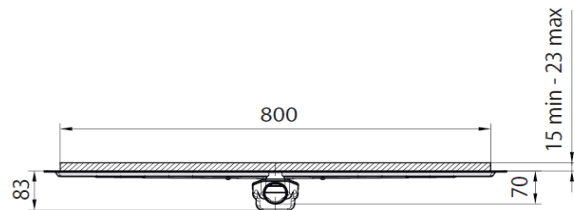
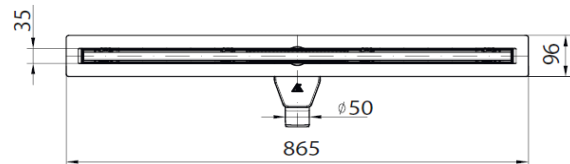
Stainless Steel



*Slim Line*



REF.3002 - horizontal swivel siphon 360°  
to be purchased separately



- 1 Stainless steel grid
- 2 Strainer to catch dirt
- 3 Height-adjustable stainless steel frame support from 0-8 mm
- 4 Height-adjustable stainless steel frame
- 5 Drain body
- 6 Gasket HT D50
- 7 Swivel side siphon D50



✓ Body Support  
(polystyrene)