

LINEAR FLOOR DRAIN - STAINLESS STEEL FRAME VERTICAL INSTALLATION OUTLET D50

⌚ 45 l/min ↑ 70 mm ⌀ 50 mm

MODEL

SlimLine

REF. NO.

CH 800 SL

DESCRIPTION

Linear Floor Drain
for vertical installation
outlet D50

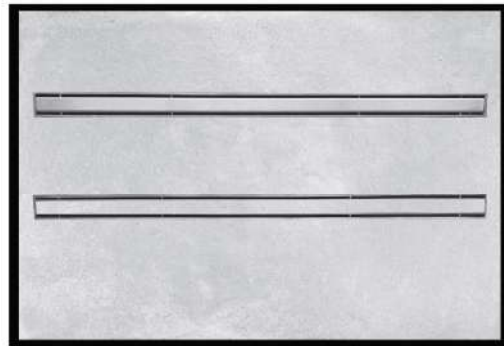
- flowrate 45 l/min
- installation height 70 mm
- grid height adjustable
0-8 mm
- stainless steel grid 1.5 mm
matt finish

SIZE

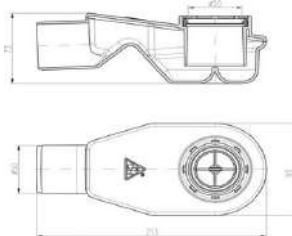
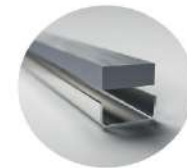
800 mm

FINISH

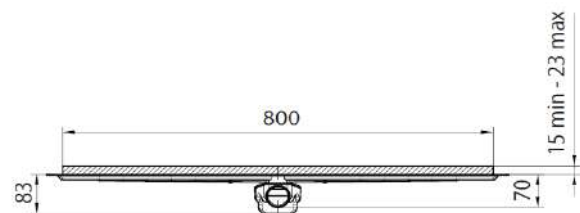
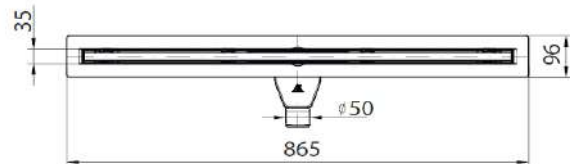
Stainless Steel



Slim line



REF.3002 - horizontal swivel siphon 360°
to be purchased separately



- 1 Stainless steel grid
- 2 Strainer to catch dirt
- 3 Height-adjustable stainless steel frame support from 0-8 mm
- 4 Height-adjustable stainless steel frame
- 5 Drain body
- 6 Gasket HT D50
- 7 Swivel side siphon D50



✓ Body Support
(polystyrene)