

MODEL

Divina Dual

REF. NO.

DIVPP19014025-U0K
 (DIP190140S2-U0K)
 KPAV2F2LDI19914-HN
 (PANV2F2LDI19914-HN)

DESCRIPTION

Dual Seat Rectangular
 Whirlpool bath in soft white,
 8 lateral whirlpool jets,
 Soft Touch control Panel,
 Natural Air (2 jets),
 Bath waste column,
 Chromolight, Disinfection,
 Cascade, heater,
 left installation,
 deck mounted bath mixer
 with drop save drainpipe,
 2 black head rests,
 1 long black seat, bluetooth,
 integrated loudspeakers,
 2 front panels &
 2 side panels in burlington
 with matt black
 aluminium frame

ELECTRICAL

- TENSION : 220-230 V
- FREQUENCY : 50 Hz
- MAXIMUM POWER CONSUMPTION : 2350 W
- HYDRO : 900+900 W
- AIRPOOL : 400 W
- NATURAL AIR : 1050 W
- HEATER : 1300 W
- CASCADE : 550 W

TECHNICAL DATA

Total area 2.66 m²
 Bathtub +
 components = 150 kg
 Max water = 650 kg
 Suggested max users
 weight = 150 kg
 Specific weight 400 kg/m²

SIZE

1900 x 1400 x 630 mm
 RIM : 35 mm
 WATER CAPACITY : 650 litres

FINISH

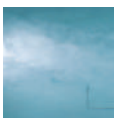
BATHTUB : Soft White
 PANELS : Burlington
 FRAME : Matt Black



Wainscoting Frame



Cascade



Surround the body with a soft cloud of oxygen. Thanks to the new Natural Air System



Bath mounted mixer

FUNCTIONS & EQUIPMENT



Head rest



Lateral whirlpool jets



Ignition Soft Touch Panel



Natural Air



Bath waste column



Chromolight ceiling



Disinfection



Cascade



Back whirlpool jets



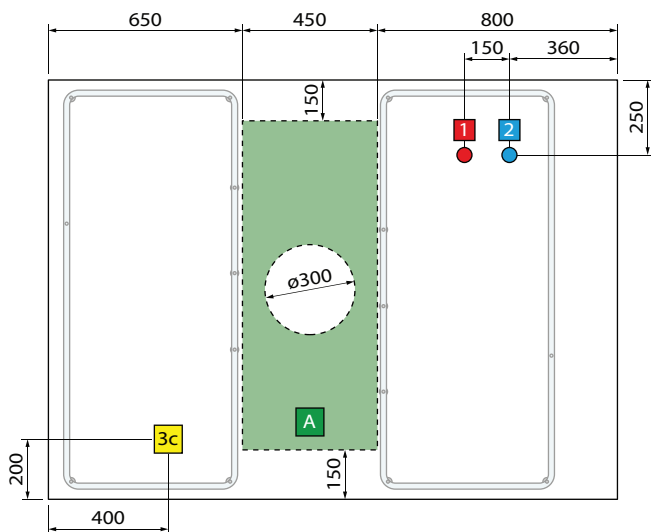
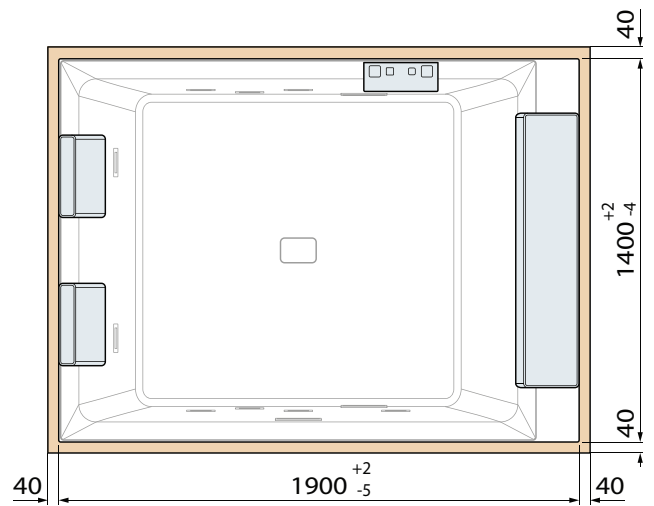
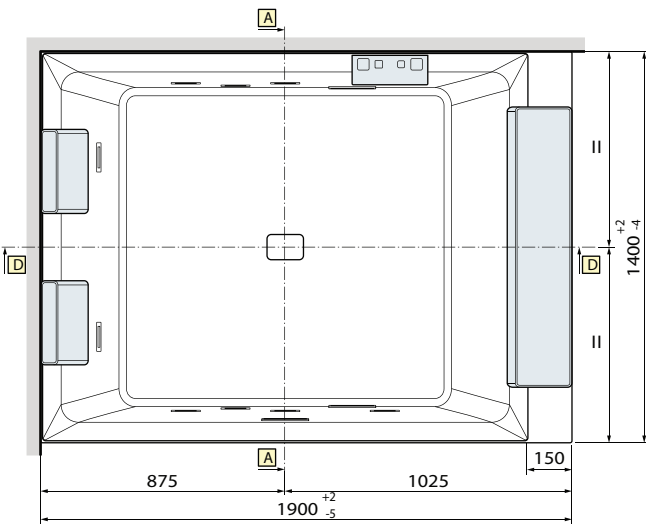
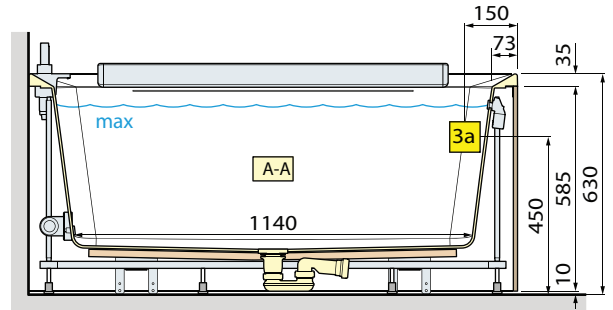
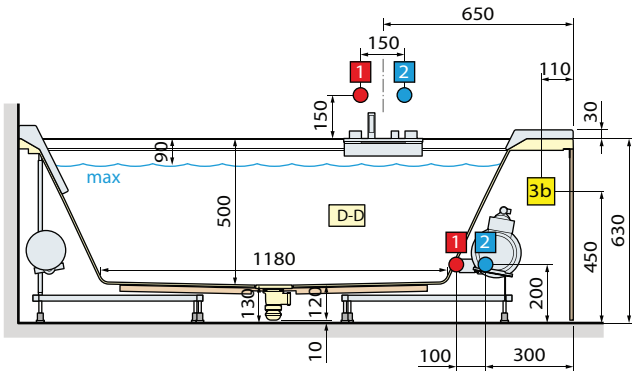
Heater



Bluetooth

DIVINA DUAL

LEFT INSTALLATION



HYDRAULIC CHARACTERISTIC

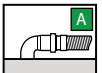
20 Airpool jets
8 Whirlpool jets
2 jets Natural Air
Waterfall
Siphon connection 1 1/2"

TECHNICAL CHARACTERISTICS

Total area 2.66 m²
Bathtub+components= 150 kg
Max water= 650 kg
Suggested max users weight= 150 kg
Specific weight 400 kg/m²

ELECTRICAL CHARACTERISTIC

Tension : 220-230 V
Frequency : 50 Hz
Maximum power consumption: 2350 W
Hydro : 900+900 W
Airpool : 400 W
Natural Air : 1050 W
Heater : 1300 W
Cascade : 550 W



WARNING!
It could be dangerous for
pacemaker wearer

Install a 30mA differential switch upstream of the appliance with a multiple-pole switch with a minimum contact opening ≥ 3 mm.