

MODEL

Divina B35

REF. NO.

DIVX51891002-UOK + PANVFDI189-HN
+ PANVLDI109C-N

*Other code : D151891002-U4U composed of
D151891002-UOK + PANVFDI189-HN + PANVLDI109C-N*

DESCRIPTION

Rectangular Whirlpool bath in soft white,
6 Lateral whirlpool jets,
Soft Touch control panel,
Bath waste column with drop save drainpipe,
bath mounted mixer,
1 black head rest,
2 front panels &
2 side panels in burlington with matt black aluminium frame on the long front panels only

ELECTRICAL

- TENSION : 220-230 V
- FREQUENCY : 50 Hz
- HYDRO : 900 W
- SIPHON CONNECTION : 1 1/2"

TECHNICAL DATA

Install a 30mA differential switch upstream of the appliance with a multiple pole switch with a minimum contact opening ≥ 3 mm

SIZE

1800 x 1000 x 630 mm
RIM : 35 mm
WATER CAPACITY : 430 litres

FINISH

BATHTUB : Soft White
PANELS : Burlington
FRAME : Matt Black



FUNCTIONS & EQUIPMENT



Click-clack waste column



Head rest



Lateral whirlpool jets

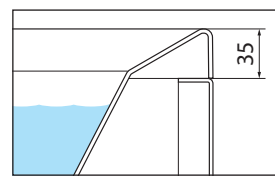
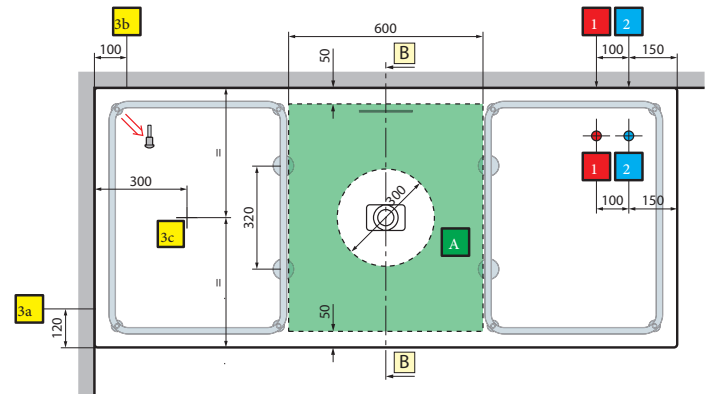
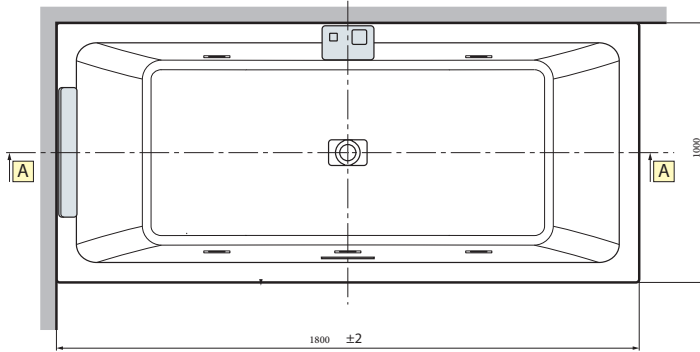
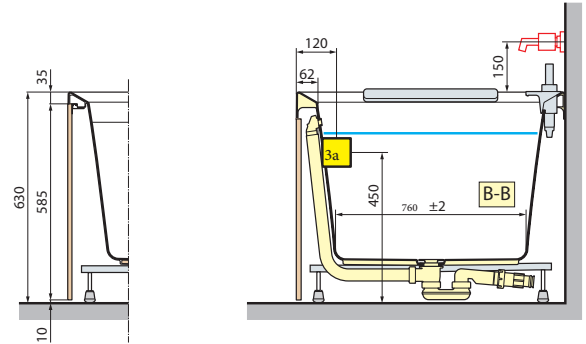
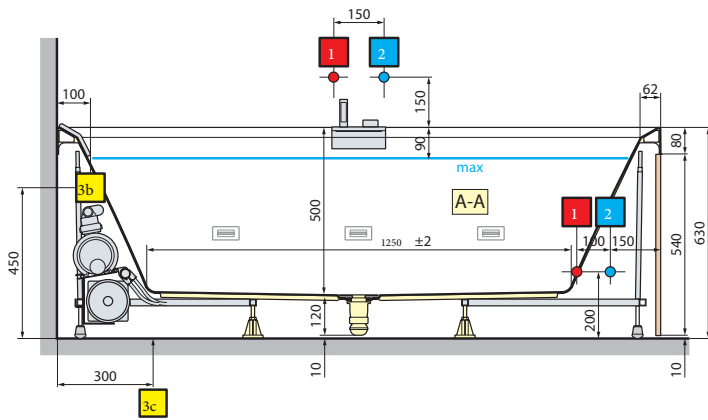


Bath waste column

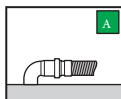
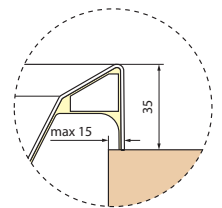


Ignition Soft Touch Panel

DIVINA B35



RIM - 3,5 CM



HYDRAULIC CHARACTERISTIC
 16 Airpool jets
 6 bocchette whirlpool
 Siphon connection 1 1/2"

ELECTRICAL CHARACTERISTIC
 Tension : 220-230 V
 Frequency : 50 Hz
 Maximum power consumption:
 Whirlpool : 900 W
 Airpool : 400 W
 Plus : 1300 W
 Natural Air : 1050 W

Install a 30mA differential switch upstream of the appliance with a multiple-pole switch with a minimum contact opening ≥ 3 mm.